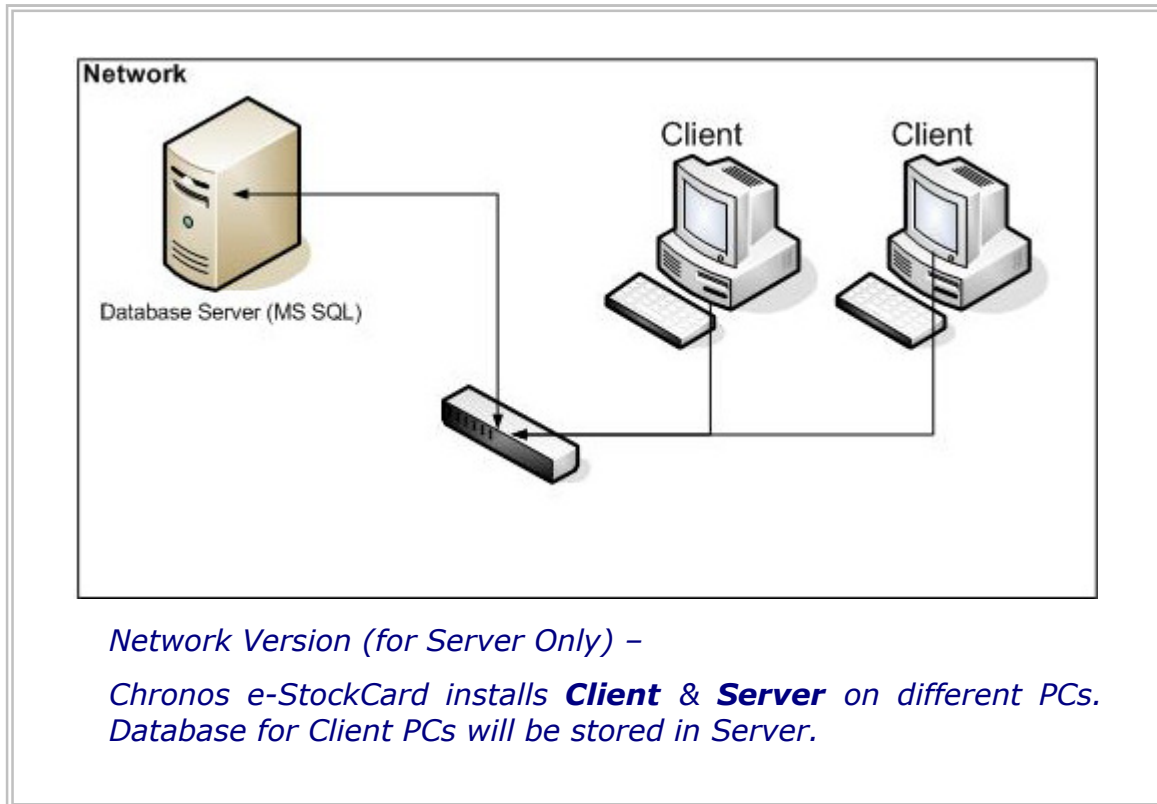


INDEX

Section	Title	Page
I	Chronos e-StockCard Network Version for Server – Introduction	2
II	Chronos e-StockCard Network Version for Server – Typical Installation (Recommended)	3 – 4
III	Chronos e-StockCard Network Version for Server – Custom Installation	5

Section I : Introduction



For Your Information:

If you purchased one license of Chronos e-StockCard, you can install Client and Server on different PCs. We count it as one license. But you are not allowed to install Chronos e-StockCard Network Version for Client on more than one PC if you only have one license. One license is only for one Client PC or one Standalone PC.

Section II : Typical Installation (Recommended)

1. Run the Chronos e-StockCard setup program from:-

- i. *Chronos e-StockCard Setup CD (Auto Run).*
- ii. *"Chronos e-StockCard vX.X.X" folder, double click on the "Install_eStockCard.exe".*

The setup program will guide you through the steps required to install Chronos e-StockCard Client and Server components.

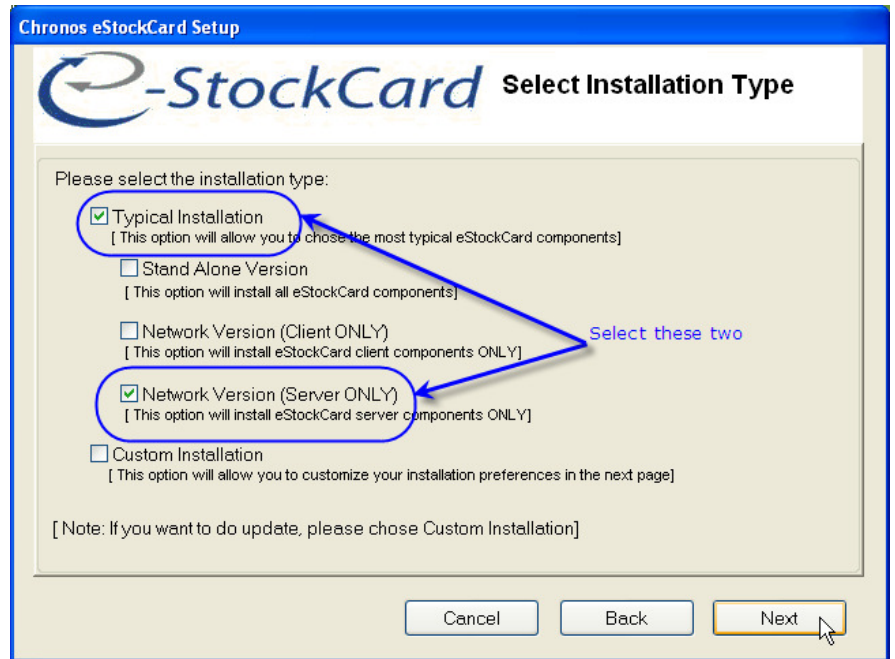
2. You will see the "Welcome to Chronos eStockCard Installation" screen. Click **Next** to continue.



3. **Tick** the "Agree With The Above Agreement" checkbox and click **Next** to continue.

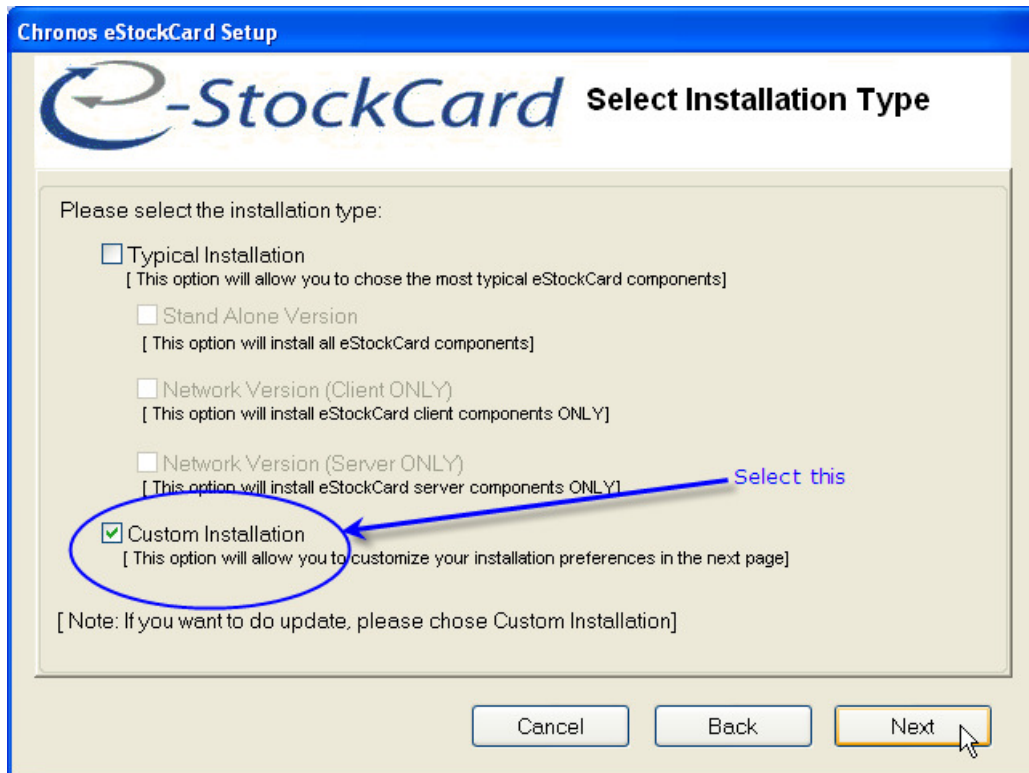


4. At "Select Installation Type" screen, select "**Typical Installation**" and "**Network Version (Server ONLY)**". Click **Next** to continue with other steps until "Installation Completed" screen shows up.



Section III : Custom Installation

1. At "Select Installation Type" screen, select "**Custom Installation**". Click **Next** to continue.



2. At "Select Component" screen, select "**Install eStockCard Server**". Click **Next** to continue with other steps until "**Installation Completed**" screen shows up.

